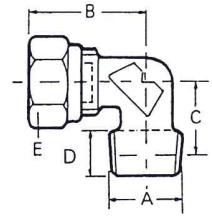


ELBOW FITTINGS - 90 DEGREES

Complete with compression nut and sleeve

Product Code	Tube OD	A Thread	B mm	C mm	D mm	E mm	Suitable Nut	Suitable Sleeve
8021	3/16"	1/8" BSP	22	18.24	9.5	11.30	1001	1021
8023/1	1/4"	1/8" BSP	23.80	18.24	9.5	15.7	1003	1023

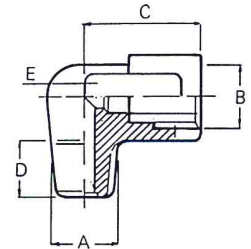
Material - BRASS Finish - NATURAL



Not supplied with compression nut and sleeve. See below for details.

Product Code	Tube OD	A Thread	B Thread	C mm	D mm	E mm	Suitable Nut	Suitable Sleeve
LV 90103	6 mm	M6x1	M10x1	17	5.5	14		
LV 90096	6 mm	M8x1	M10x1	17	5.5	14		
LV 90097	6 mm	M8x1.25	M10x1	17	5.5	14	LV 90460	LV 90560
LV 90099	6 mm	M10x1	M10x1	17	5.5	14		
LV 90105	6 mm	M10x1.25	M10x1	17	5.5	14		
LV 90098	6 mm	1/8" BSP	M10x1	17	6.5	14		

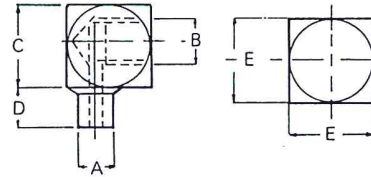
Material - BRASS Finish - NATURAL



Not for use with compression nuts and sleeve

Product Code	A Thread	B Thread	C mm	D mm	E mm
51-1402-03	1/4" UNF	1/8" BSP	14.20	6.35	14.20
51-1402-02	5/16" UNF	1/8" BSP	14.20	6.35	14.20

Material - STEEL Finish - ZINC PLATED.

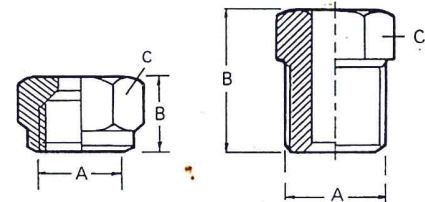


COMPRESSION TUBE NUTS AND SLEEVES.

Tube nuts

Product Code	Tube OD	A Thread	B mm	C mm
1001	3/16"	1/8" BSP	10	11.30
1003	1/4"	1/4" BSP	11	15.27
LV 90460	6mm	M10x1	13	10

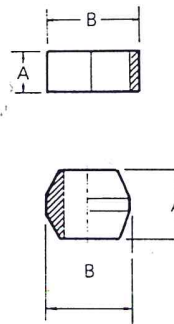
Material - 1&2 BRASS Finish - NATURAL
3 - STEEL Finish - BLACK ANODISED



Tube sleeves

Product Code	Tube OD	A mm	B mm
1021	3/16"	5.5	6.2
1023	1/4"	6.35	8
LV 90560	6 mm	6.5	8

Material - BRASS Finish - NATURAL



Grease nipples suitable for use with the above are shown within this catalogue

