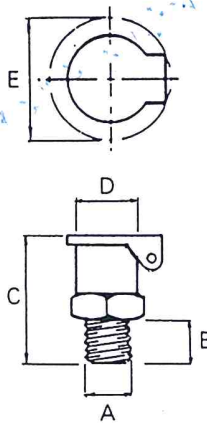


THREADED OIL CUPS

Material - Body - BRASS Filler - STEEL Finish - NICKEL PLATE

Product Code	A	B	C	D	E	Hex	A/Flats
		mm	mm	mm	mm	mm	
C1730	3/16" - 32 TPI	4.8	14.3	6.4	15.9	15.9	5/16"
C1732	1/4" - 32 TPI	4.8	14.3	6.4	15.9	15.9	5/16"
C1733	1/4" - 26 TPI	5.6	20.6	7.1	15.9	15.9	3/8"
C1735	10 - 32 TPI	4.8	14.3	6.4	15.9	15.9	5/16"
C1736	2 BA	4.8	14.3	6.4	15.9	15.9	5/16"
C1740	1/4" - 20 TPI	5.6	20.6	7.1	15.9	15.9	3/8"
C1743	5/8" - 18 TPI	5.6	20.6	7.1	15.9	15.9	3/8"
C1748	3/8" - 24 TPI	6.4	17.5	9.5	20.6	20.6	7/8"
C1749	7/8" BSP	6.4	17.5	9.5	20.6	20.6	7/16"
C1750	1/8" NPT	6.4	17.5	9.5	20.6	20.6	7/16"
C1752	7/16" - 24 TPI	7.1	18.3	11.1	23.8	23.8	1/2"
C1763	1/4" BSP	11.1	26.2	15.9	31.8	31.8	11/16"
C1764	1/4" NPT	11.1	26.2	15.9	31.8	31.8	11/16"
C1787	1/8" BSP	38.1	50.8	9.5	23.8	23.8	7/16"
*C2141	1/8" BSP	9.5	31.8	15.9	31.8	31.8	11/16"

* ADD SUFFIX 'WF' IF SYPHON TUBE & WICK IS REQUIRED



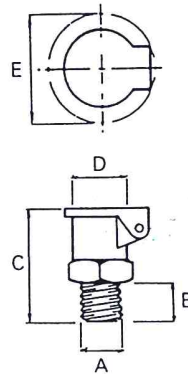
THREADED OIL CUPS

Material - Body - BRASS
Filler - STEEL

ROTATING SPRING LID

Finish - NICKEL PLATE

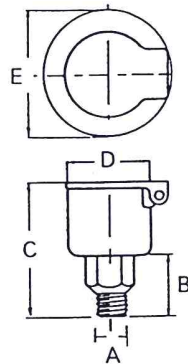
Product Code	A	B	C	D	E	Hex	A/Flats
		mm	mm	mm	mm	mm	
C1850	M5 x 0.8	4.0	15.0	7.5	16.0	16.0	8mm
C1851	M6 x 1	5.0	15.0	7.5	16.0	16.0	8mm
C1852	M6 x 1	5.0	18.5	9.5	19.0	19.0	10mm
C1853	M8 x 1	5.0	18.5	9.5	19.0	19.0	10mm
C1854	M8 x 1.25	6.0	18.5	11.0	21.0	21.0	12mm
C1855	M10 x 1.5	6.0	22.0	12.5	22.0	22.0	14mm
C1856	M10 x 1	6.0	22.0	12.5	22.0	22.0	14mm
C1857	M12 x 1.5	8.0	27.5	15.0	27.0	27.0	17mm



THREADED OIL CUPS

Material - STEEL Finish - NICKEL PLATE

Product Code	A	B	C	D	E	Hex	A/Flats
		mm	mm	mm	mm	mm	
D1914	1/8" BSP	17.5	36.5	15.9	31.8	31.8	7/16"
D1920	1/8" BSP	17.5	32.5	19.1	34.9	34.9	7/16"
D1921	1/8" NPT	17.5	41.3	19.1	34.9	34.9	7/16"
D1927	1/8" BSP	20.6	47.6	25.4	41.3	41.3	9/16"
D1928	1/8" BSP	20.6	47.6	25.4	41.3	41.3	9/16"
D1937	1/8" BSP	20.6	47.6	31.75	41.3	41.3	9/16"
D1938	1/8" BSP	23.8	50.8	31.75	41.3	41.3	9/16"
D1952	1/4" BSP	23.8	68.3	41.3	63.5	63.5	11/16"
D1958	1/4" BSP	28.6	85.7	57.2	79.4	79.4	11/16"
D1959	3/8" BSP	29.4	85.7	57.2	79.4	79.4	11/16"
D1960	1/2" BSP	31.8	88.9	57.2	79.4	79.4	7/8"
D1961	3/2" NPT	28.6	85.7	57.2	79.4	79.4	11/16"



ADD SUFFIX 'WF' IF SYPHON TUBE AND WICK IS REQUIRED

ROTATING SLEEVE OILER

Material - BRASS Finish - NICKEL PLATE

Product Code	A	B	C	D
		mm	mm	mm
I 2202	1/4" - 26 TPI	6.4	17.5	8.7
I 2204	3/16" - 32 TPI	6.4	17.5	8.7
I 2209	5/16" - 18 TPI	6.4	19.1	11.1
I 2215	1/8" BSP	7.9	22.2	12.7

