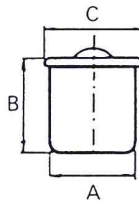


## BALL VALVE OILERS

Material - STEEL      Finish - ZINC PLATE

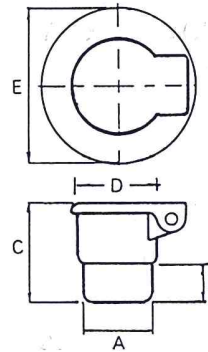
Product Code	Hole Diameter	A	B mm	C mm
A1401	3/16"	0.190 - 0.192"	4.8	5.6
A1402	1/4"	0.253 - 0.255"	5.6	7.1
A1403	5/16"	0.315 - 0.317"	9.5	8.7
A1404	3/8"	0.378 - 0.380"	8.7	10.3
A1411	5mm	5.1mm	6.0	5.5
A1412	6mm	6.1mm	7.0	6.5
A1413	8mm	8.1mm	9.0	9.0
A1414	10mm	10.1mm	11.0	11.5



## SHOULDER DRIVE OIL CUP

Material - STEEL      Finish - NICKEL PLATE

Product Code	Hole Diameter	A	B mm	C mm	D mm	E mm
BS1511	1/4"	0.253 - 0.255"	5.6	11.9	7.2	15.9
BS1512	3/16"	0.190 - 0.192"	5.6	11.9	7.2	15.9
BS1513	6mm	6mm Taper	5.6	11.9	7.2	15.9
BS1514	3/16"	3/16" Taper	5.6	11.9	7.2	15.9
BS1516	5/16"	0.315 - 0.317"	6.4	13.5	8.9	19.1
BS1518	7mm	7mm Taper	6.4	13.5	8.9	19.1
BS1521	3/8"	0.378 - 0.380"	7.1	15.1	10.5	20.6
BS1523	8mm	8mm Taper	7.1	15.1	10.5	20.6
BS1536	10mm	10mm Taper	7.1	18.3	12.7	25.4
BS1549	5/8"	0.628 - 0.630"	9.5	23.8	19.0	34.9
BS1555	3/4"	0.753 - 0.755"	11.1	27.0	25.4	41.3
BS1556	7/8"	0.878 - 0.880"	12.7	28.6	25.4	41.3
BS1560	1"	1.003 - 1.005"	14.3	33.3	31.8	47.6
*BS1573	1 1/4"	1.253 - 1.255"	17.5	38.1	41.3	63.5
*BS1574	1 1/2"	1.503 - 1.507"	17.5	38.1	41.3	63.5

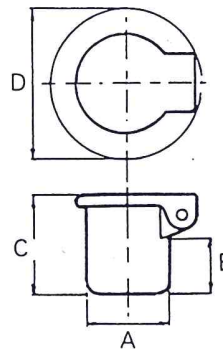


\* ADD SUFFIX **DC** IF DUST PROOF COVER IS REQUIRED

## DRIVE IN OIL CUPS

Material - STEEL      Finish - NICKEL PLATE

Product Code	Hole Diameter	A	B mm	C mm	D mm
B1604	1/4"	0.253 - 0.255"	36.5	41.3	15.9
B1614	1/4"	0.503 - 0.505"	9.5	16.7	25.4
B1620	5/8"	0.628 - 0.630"	10.3	19.1	31.8
B1623	3/4"	0.753 - 0.755"	13.5	23.8	34.9
B1625	1"	1.003 - 1.005"	14.3	25.4	41.3
B1628	1 1/4"	1.253 - 1.256"	15.9	27.0	47.6
*B1640	1 3/4"	1.753 - 1.757"	14.3	25.4	69.9
*B1650	2 1/4"	2.253 - 2.258"	20.6	31.8	79.4



\* ADD SUFFIX **DC** IF DUST PROOF COVER IS REQUIRED

## SCREW CAP OIL HOLE COVER

Material - BODY BRASS      Finish - NATURAL ANODIZE  
CAP ALUMINUM

Product Code	Hole Diameter	A	B mm	C mm	D mm
AH2181	3/4"	0.752 - 0.754"	6.4	9.5	23.8
AH2182	1 5/16"	1.315 - 1.317"	9.5	17.5	38.1
AH2183	1 5/8"	1.627 - 1.629"	11.9	19.0	49.2

