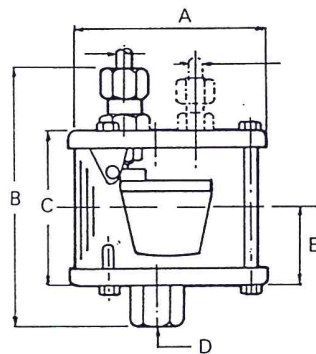


## AUTOMATIC OPEN VENT

Product No	Dimension in mm				
	A	B	C	D	E
RCL 7780	85	100	60	1/4 BSP	30



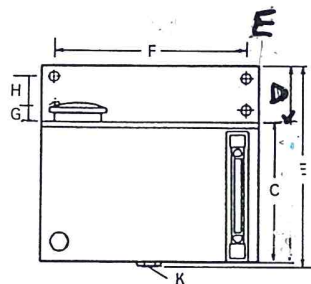
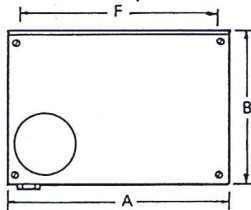
## PORTED VENT

Product No	Dimension in mm				
	A	B	C	D	E
RCL 7781	85	100	60	1/4 BSP	30
Material - STEEL, GLASS		Finish - ZINC PLATE			

## RESERVOIRS

Product No	Capacity	Dimensions in mm										Material	Finish
		A	B	C	D	E	F	G	H	J	K		
LV 10640	2 litre	155	142	146	50	125	15	20	-	8.5	3/8 BSP	Aluminium	Silver
LV 10641	2.7 litre	155	142	152	50	125	15	20	-	8.5	3/8 BSP	Plastic	Natural
LV 10642	5 litre	248	174	155	75	218	15	20	40	8.5	3/8 BSP	Aluminium	Silver
LV 10644	8 litre	362	190	170	72	242	60	18	41	9	3/8 BSP	Steel	Silver

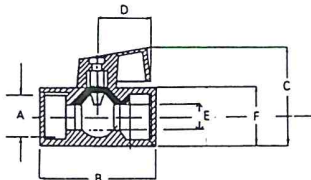
Add suffix "FS" if low level switch required



## ON/OFF VALVES

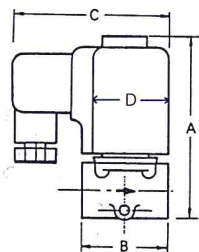
MANUALLY OPERATED NICKEL PLATED BRASS BODY

Product No	A	B	C	D	E	F
LV 10521	1/4 BSP	39	38	22	8	21



ELECTRIC SOLENOID OPERATED

Product No	Voltage	A	B	C	D	Thread
LV 10523	110. 50	82	35	79	32	
LV 10524	240. 50	82	35	79	32	1/4 BSP
LV 10525	440. 50	82	35	79	32	



## AUTOMATIC CONSTANT LEVEL SYSTEMS

The advantages of having the Adams RCL 7780 constant level oiler incorporates a float operated "shut-off" valve enabling it to be filled from a central reservoir. As the pump loses oil, the pump and the constant level oiler reservoir levels fall. The valve in the RCL opens taking oil from the central reservoir, when the correct oil level is reached, the float closes the valve. The system is gravity fed using the central reservoir as a header tank. Any number of pumps can be incorporated into an automatic constant level system.

