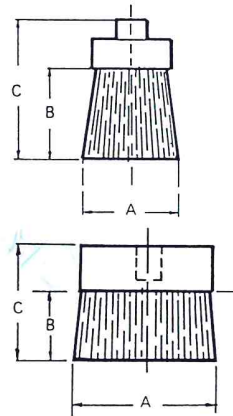


## BRUSHES

Dimensions in mm

No	A	B	C	Body
<b>ROUND - 1/8" BSP</b>				
SPR 6.5	6.5	50	65	Brass
SPR 16	16	30	53	Brass
SPR 25	25	45	70	Brass
SPR 30	30	45	70	Brass



## FLAT - 1/8" BSP

SPF 57	57	30	50	Aluminium
--------	----	----	----	-----------

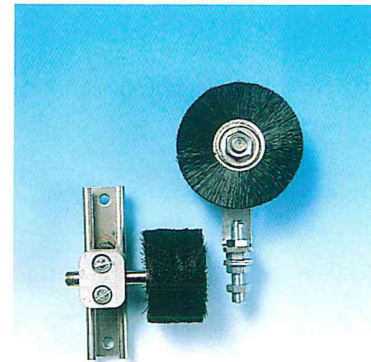
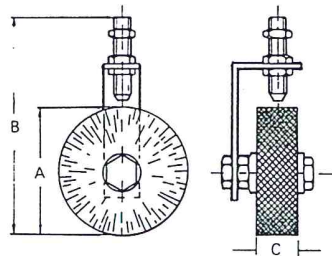
Spare brush unit Part No. SPF 57/1

## CIRCULAR - 1/8" BSP

RSM 80	80	137	25	Steel Bracket
--------	----	-----	----	---------------

Spare brush unit Part No. RSM 80/1

Add suffix "N" if nylon brush is required ie SPFN 57.  
Or suffix "B" if steel brush is required ie SPRB 25

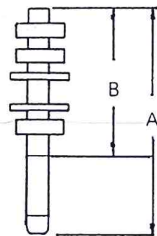


## BRUSH HOLDER - Adjustable

No	A	B	Thread
PHA 60	60	47	1/8" BSP
PHA 80	80	47	1/8" BSP
PHA 120	120	47	1/8" BSP

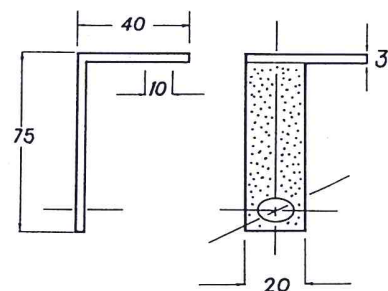
Material - STEEL

Finish - ZINC PLATE



## RSMB ANGLE BRACKET FOR USE WITH PHA

Material - STEEL  
Finish - ZINC PLATE



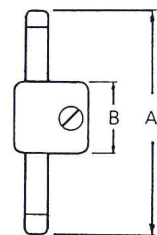
## BRUSH HOLDER

For use with mounting Rail - Swivel

No	A	B	Thread
PHB 60	60	30	1/8" BSP
PHB 80	80	30	1/8" BSP
PHB120	120	30	1/8" BSP

Material - STEEL

Finish - ZINC PLATE



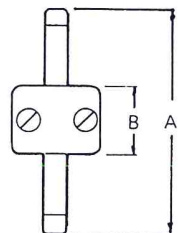
## BRUSH HOLDER

For use with mounting - Rail - Fixed

No	A	B	Thread
PHC 60	60	30	1/8" BSP
PHC 80	80	30	1/8" BSP
PHC120	120	30	1/8" BSP

Material - STEEL

Finish - ZINC PLATE



## TS11 MOUNTING RAIL FOR USE WITH PHB and PHC

Material - STEEL

