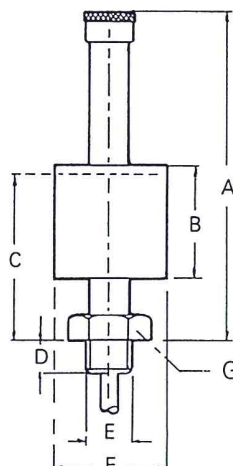


## LOW LEVEL SWITCH

For monitoring liquid levels in reservoirs of all kinds. For example: Models GSD/PSD, GRS/PRS, GPO/PPO, GTM/PTM, GET/PET, etc. This magnetic switch is equipped with hermetically sealed contacts. The virtually wear-resisting "Reed Switch" is actuated by a magnetic field inside the float.. Designed for vertical installation.

Voltage: 300V AC/DC max  
 Switch current: 0.5A  
 Contact load: 10W  
 Temperature range: - 20°C to +100°C  
 Supplied with 1 meter 2 x 0.25mm<sup>2</sup> cable

Material - BRASS BODY with ALUMINIUM FLOAT  
 Finish - NICKEL PLATED



Product Code	A mm	B mm	C mm	D mm	E BSP	F mm	G mm A/F
SMM	65	29	45	8	1/8"	25	14

## PROGRAMME TIMER

This programme timer can be fitted to all valves with the cable plug standard to DIN 43 650. Internally programmable via DIP-switches and potentiometers, range 0.5. sec to 10 hours. Four functions can be programmed. Two LEDs display the mains voltage and valve status.



Product Code	Voltage	A mm	B mm	C mm	D mm	E mm
LVT 10780	24/48V 50-60Hz and DC	90	70	41.5	21	32
LVT 10781	110/230V 50-60Hz					

### Specifications:

Timing range: On: 0.5, sec to 10 hours  
 Off: 0.5, sec to 10 hours  
 Switching load: 1 max = 1.5A at 24-48V/50-60Hz and DC  
 1 max = 0.5A at 110-230V/50-60Hz  
 Power consumption: 1.0W max  
 Rating: IP 65  
 Working temperature: 0°C to +60°C  
 Outlet: Connector pin standard to DIN 43 650  
 Material - POLYAMID BODY

